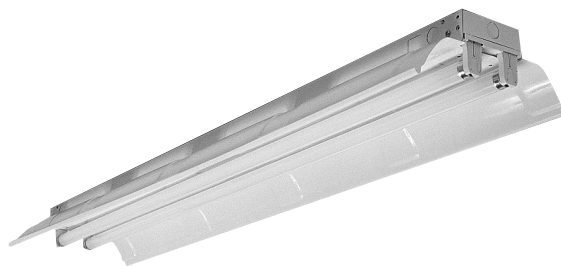


Maximum versatility,
highly
efficient
 and simple to use.

EE/FF SERIES HO OPEN INDUSTRIAL HO



OPEN INDUSTRIAL HO 48", 96" LENGTHS
 2 LAMP T8 OR T12 HIGH OUTPUT

Reflector is embossed for rigidity. Reflector sides are turned up for rigidity. Solid top reflector, EE series. 10% aperture reflector, FF series. Fully enclosed wiring.

Project: _____
 Location: _____
 Catalog No: _____
 Fixture Type: _____
 Mfg: _____ Lamps: _____ Qty: _____
 Notes: _____

Ordering Guide

Explanation of Catalog Number Example: EE296H0120LE

Open Industrial	Number of Lamps in Width	Lamp/Fixture Length/Watt:	Voltage	Ballast Type	Options
<input type="text"/>	<input type="text"/>	<input type="text"/>	<input type="text"/>	<input type="text"/>	<input type="text"/>
Flat Reflector 4½" Wide x 2⅝" Deep Channel EE = Solid Top Reflector (Standard) FF = 10% Up-light Reflector	1 or 2	48H = Nominal 48" 60W T12 HO 96H = Nominal 96" 86W T8 HO or 110W T12 HO	UNV = 120/277V 120 = 120V 277 = 277V 347 = 347V	LE* = Mag.T12 Energy Saving SR = Elect. RS T8 * Available Only for 8' T12 HO. For 4'T12 HO, Leave Blank	Add Appropriate Suffix to Catalog No.

Features

- Reflector is embossed for rigidity
- Reflector sides are turned up for rigidity and safe handling
- Solid top reflector, optional
- 10% aperture reflector, optional
- 4 5/8" wide embossed clevis shaped channel suitable for slide grip hangers.
- Fully enclosed wiring
- Combination end cap for continuous row mounting.
- Convenience outlet and switch K.O.s provided
- Optional hangers, wire guards and aligners.
- Optional heavy duty coupling.

Specifications

Materials: Chassis parts are die-formed code gauge cold rolled steel, 2 5/8" deep x 4 1/2" wide channel.

Reflector: Heavy duty die-formed with deep lateral embossments and return edges for additional stability and uniformity and two quick release quarter turn fasteners for attachment to housing.

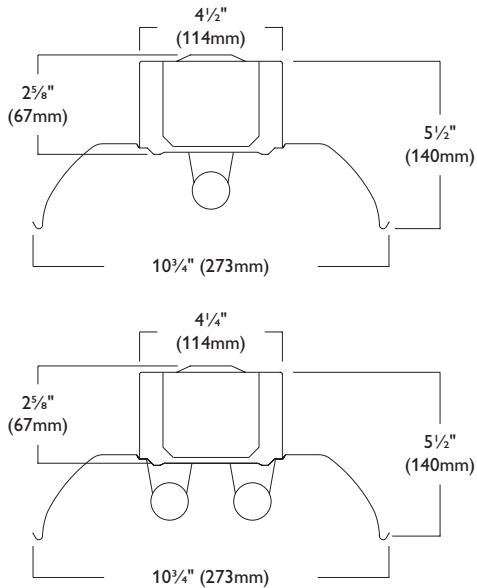
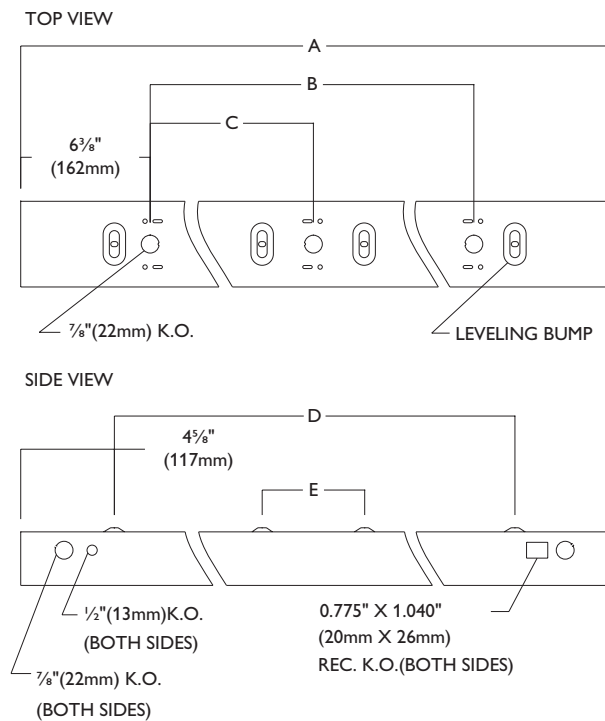
Finish: Chassis—baked polyester white enamel. Phosphate undercoating. Reflector—baked white polyester enamel minimum 85% reflectance.

Electrical: Rapid start HPF, thermally protected class "P" ballast C.B.M. certified by E.T.L. If K.O. is within 3" of ballast, use wire suitable for at least 90°.

Labels: Listed by CSA.

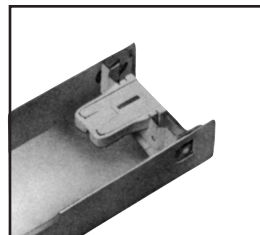
This product may have a mercury containing lamp. Manage in accord with Disposal Laws. See: www.lamprecycle.org

Dimensions

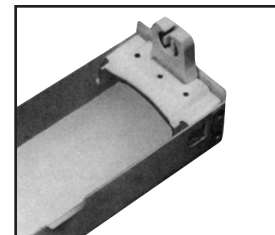


Nominal Length	A	B	C	D	E
96"	96" (2438mm)	83" (2108mm)	41 1/4" (1061mm)	86 3/4" (2204mm)	5" (127mm)
48"	48" (1219mm)	35" (889mm)	17" (432mm)	38 3/4" (984mm)	5" (127mm)

Mounting Methods/Features



Flipstrip—shipping position



Flipstrip—positioned for installation

EE/FF SERIES HO OPEN INDUSTRIAL HO

Performance

Report Number: 86106

Catalog No: EE296H-120LE

Lamp Type: 2F96T12/CW/HO

Lumens per Lamp: 9150

CIE Type: Direct

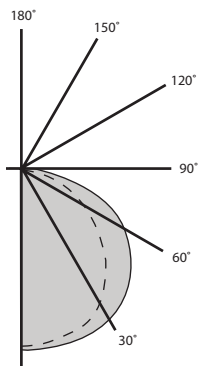
Spacing Criteria: 1.5

Shielding Angle: 180

Total Efficiency: 88.4%

Coefficients of Utilization

RC	80%			50%			30%		
RW	70	50	30	50	30	10	50	30	10
RCR	Zonal Cavity Method Effective Floor Cavity Reflectance = .20								
Room Cavity Ratio	1	2	3	4	5	6	7	8	9
1	96	92	88	86	83	81	83	80	78
2	87	80	74	75	70	66	72	68	65
3	79	70	63	66	60	55	64	59	54
4	73	62	54	58	52	47	56	51	46
5	66	54	46	51	44	39	49	38	39
6	60	48	40	46	39	34	44	39	33
7	55	43	35	41	34	29	40	33	29
8	51	38	30	37	30	24	35	29	25
9	47	34	27	33	26	21	32	26	21
10	43	31	24	30	23	19	29	23	19



Options/Accessories



Stem and Canopy Sets:

Suspends luminaire 12", 18", 24", 36", 48" from surface and can be used in conjunction with Heavy Duty Slide Grip Hanger.

Catalog Number:

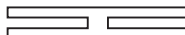
SV5F12 (12"), **SV5F18** (18"), **SV5F24** (24"), **SV5F36** (36"), **SV5F48** (48").



Canopy Spacer (1½")

Suspends luminaire approximately 1½" from surface.

Catalog Number: **STSK**



Reflector Row Aligners

Tough, plastic aligners for luminaire reflectors.

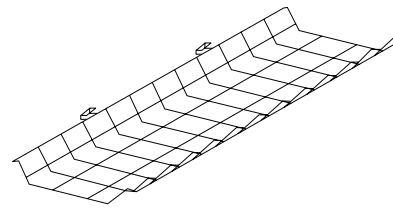
Catalog Number: **EE9RA**



Chain Hanger Kit:

Two 24" heavy duty link chains with sturdy "V" hooks that grip luminaires at four knockout points for level suspension.

Catalog Number: **EE9HC**



Wire Guards:

Hinge and latch positive-lock construction, complete with longitudinal and transverse struts for secure protection.

Catalog Number: **EE9G4**



Heavy Duty Slide-Grip Hanger

Catalog Number: **EE9H3**



© 2013 Koninklijke Philips N.V. All rights reserved.
Specifications are subject to change without notice.
www.philips.com/luminaires

EE-FF Series HO 08/13 page 3 of 3

Philips Lighting Company
200 Franklin Square Drive
Somerset, NJ 08873
Phone: 855-486-2216

Philips Lighting Company
281 Hillmount Road
Markham ON, Canada L6C 2S3
Phone: 800-668-9008